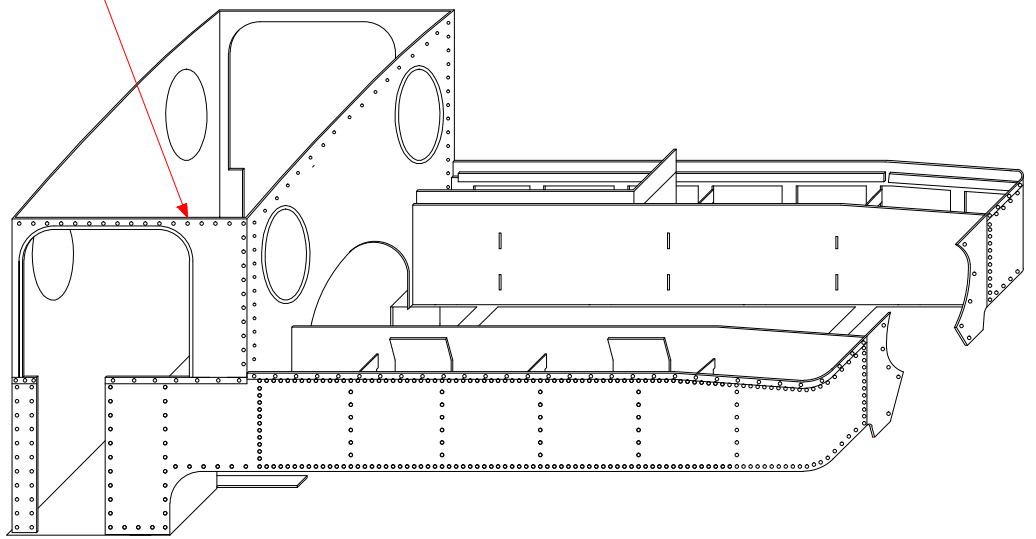
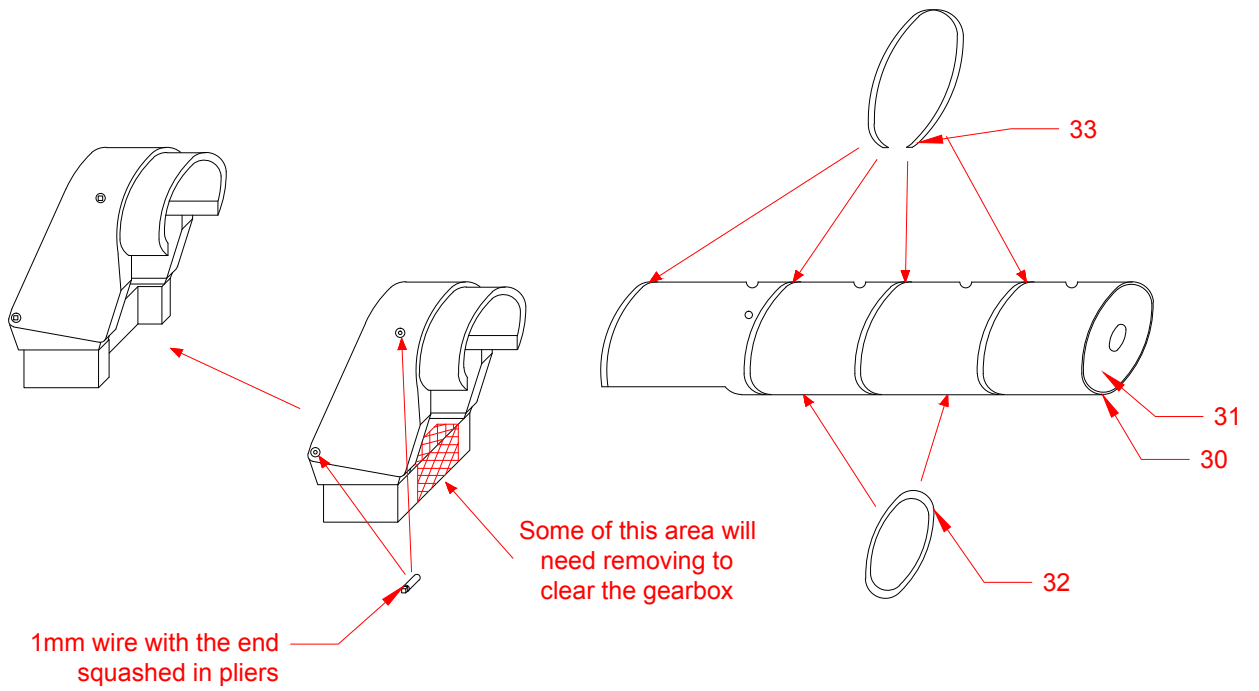


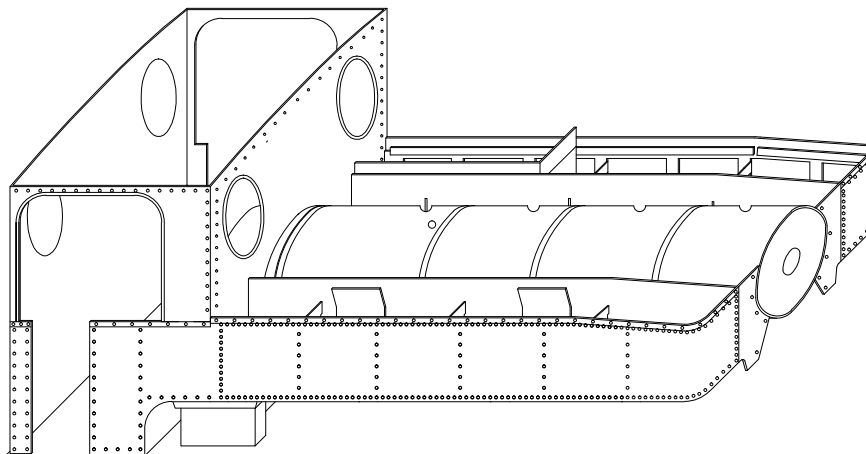
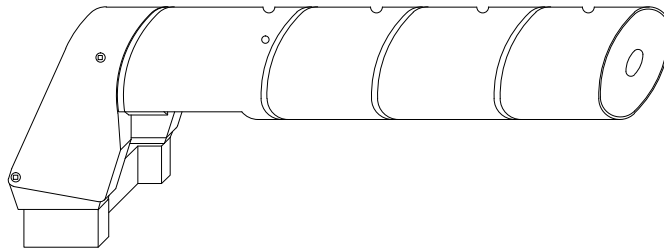
If using the ventilator, the half etched hole needs to be cut out.

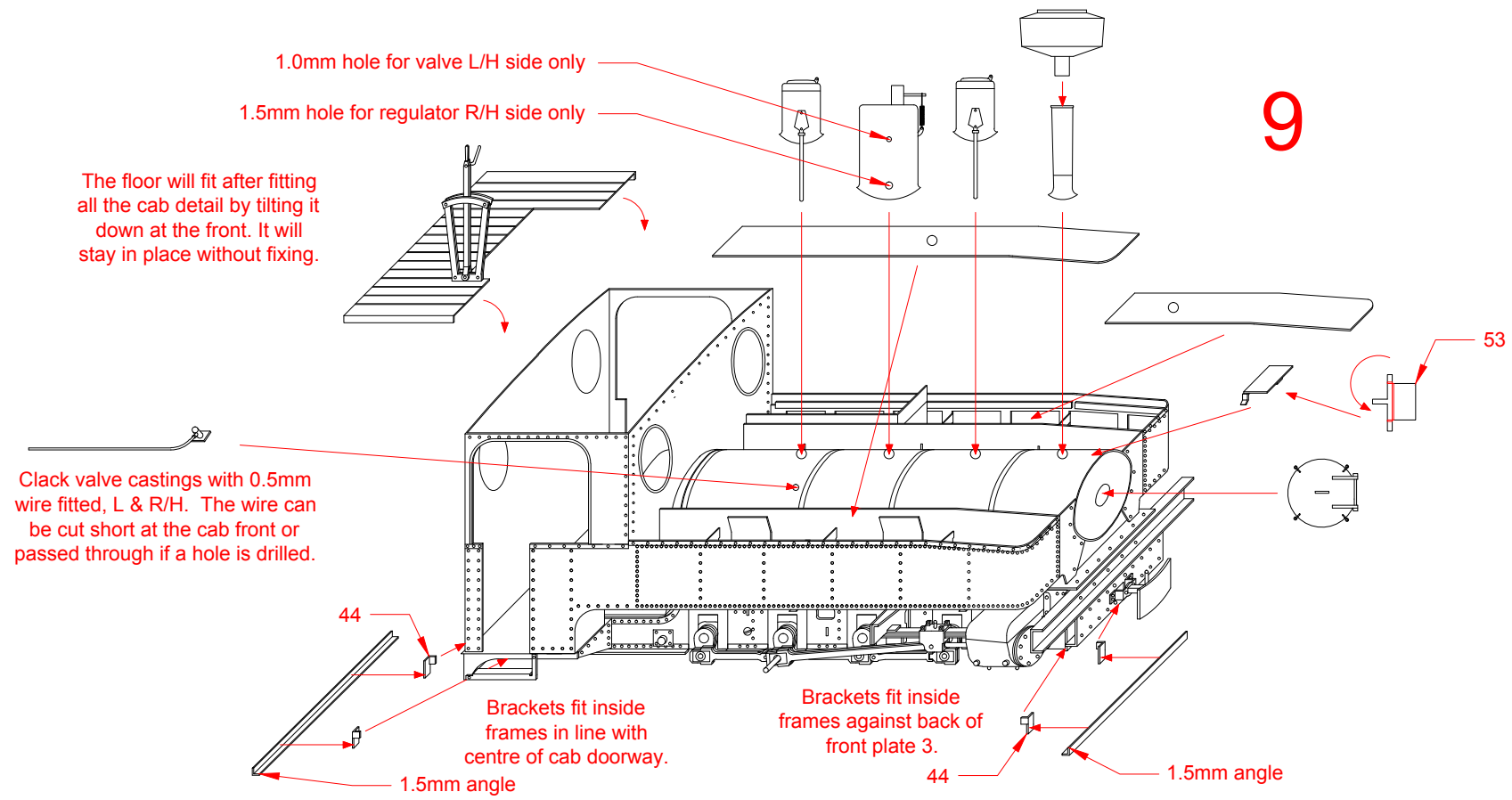
7





8





Clack valve castings with 0.5mm wire fitted, L & R/H. The wire can be cut short at the cab front or passed through if a hole is drilled.

Brackets fit inside frames in line with centre of cab doorway.

Brackets fit inside frames against back of front plate 3.

9

53

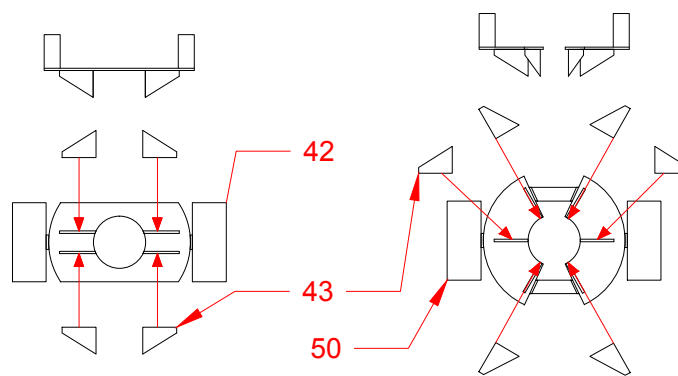
44

44

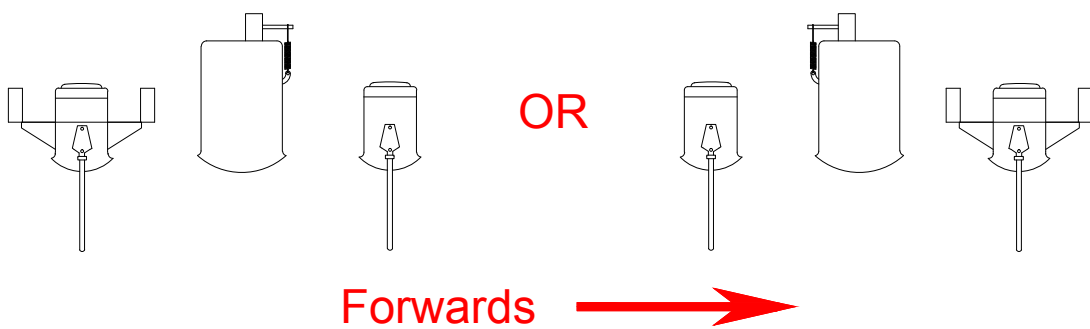
1.5mm angle

1.5mm angle

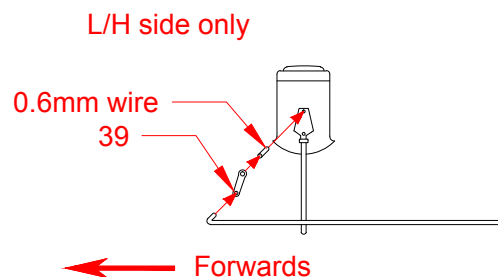
The hose reel has proved impossible to draw for the sketches so this is the best I can do. The L/H one is generic and easy to fit, the R/H one more accurate but very fiddly. Fit the gusset plates while still flat, fold up and curve the ends the reinforce with solder. The L/H one sits on top of the sand control on the dome but the R/H one will need positioning by hand. Remove the joining strips on 50 after fitting to the dome.

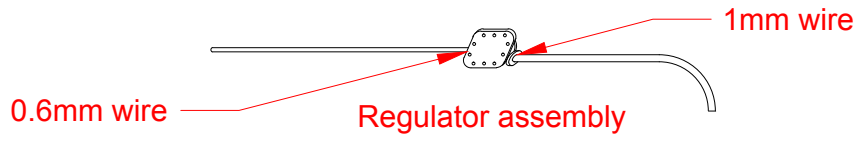
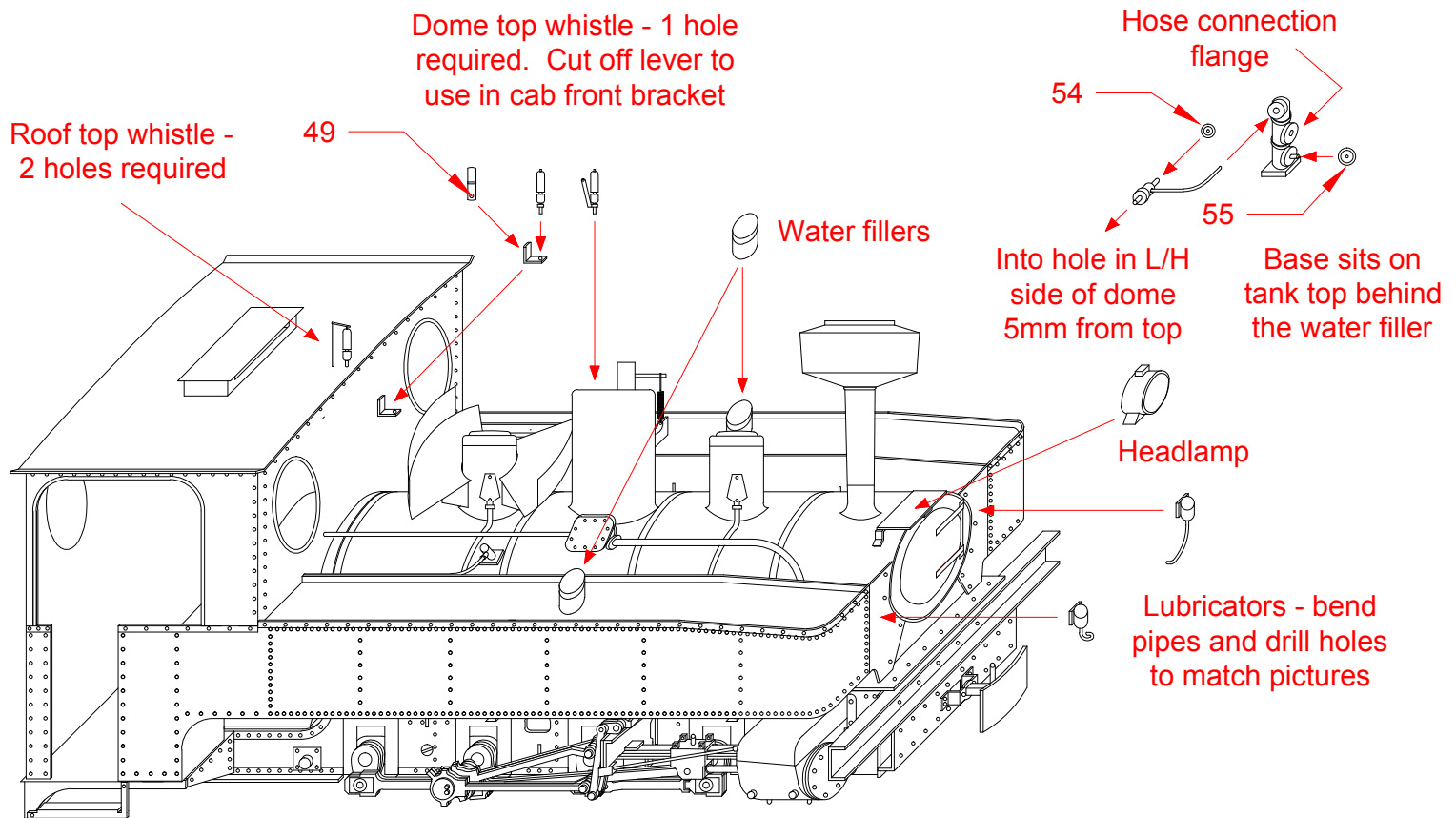


The sand dome with the hose reel can be fitted front or rear. The safety valves on the steam dome are always on the side furthest from the hose reel. Fit sand pipes from 0.7mm wire before fitting the sand domes. Drill the holes for the regulator and water lifter valve after fitting the steam dome.



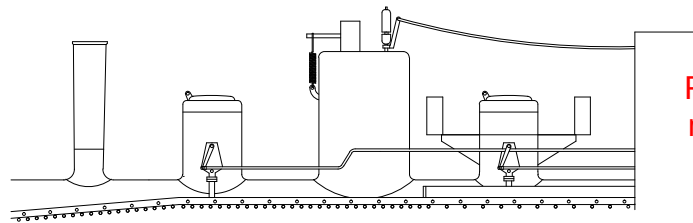
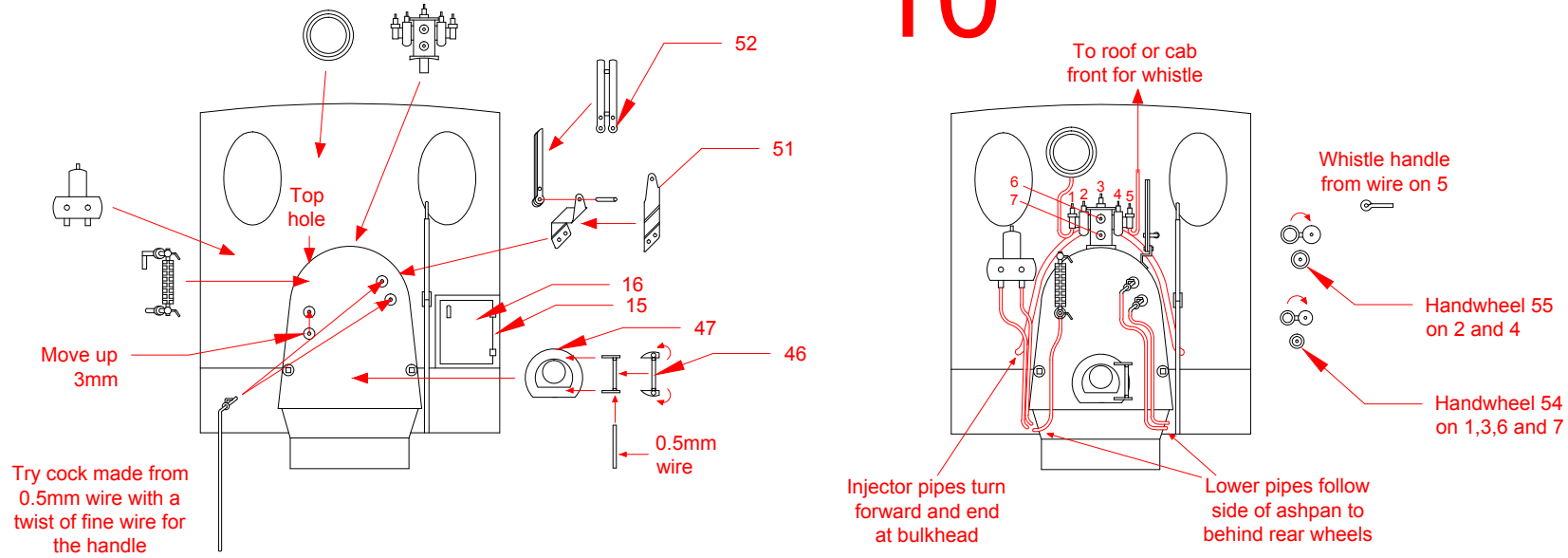
10





9

10



Detail drawing showing sand box levers 48 and routing of pull rods made from 0.5mm wire