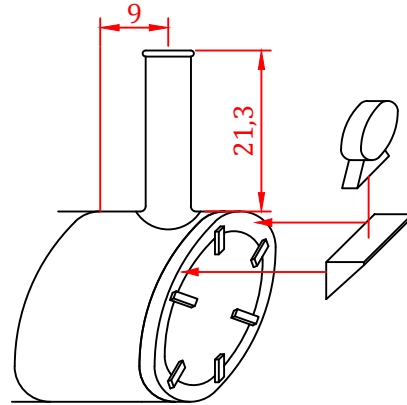
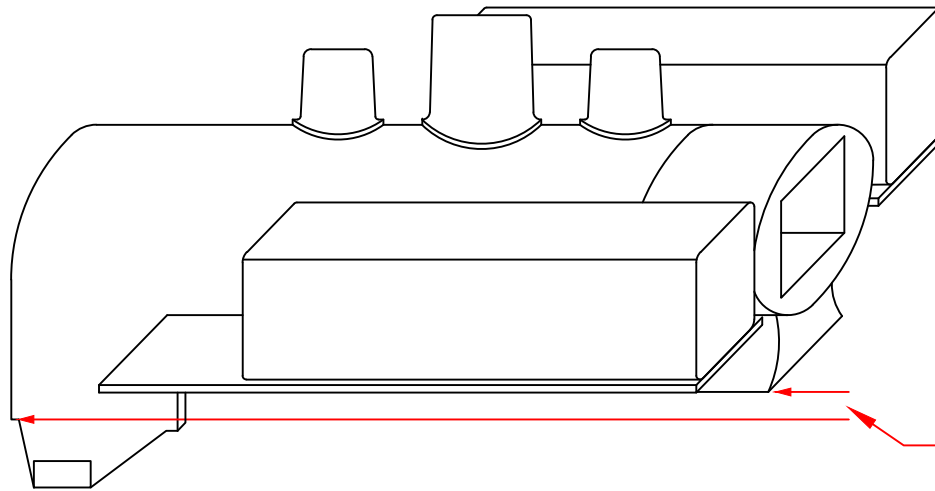
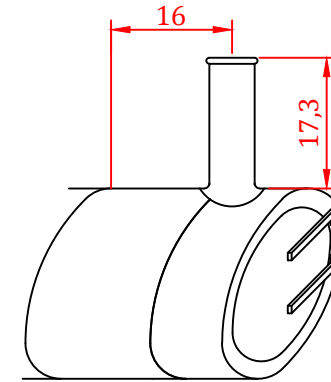


Alco body 1

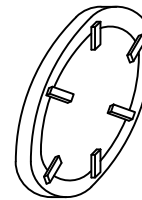


Choose your chimney and make sure it is upright when you glue it on. The center of the WD chimney is 9mm from the step in the boiler, Mountaineer's chimney is 16mm from the same point. Early Mountaineer had the WD smokebox for a while with the lamp bracket and maybe the lamp, it also had the extended smokebox later on with the chimney in the WD position, check pictures to be sure.

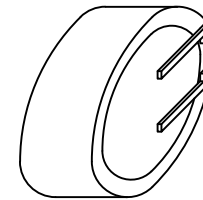


Choose your smokebox, clean up the square fitting at the back and glue in place, filler may be needed on the join.

WD



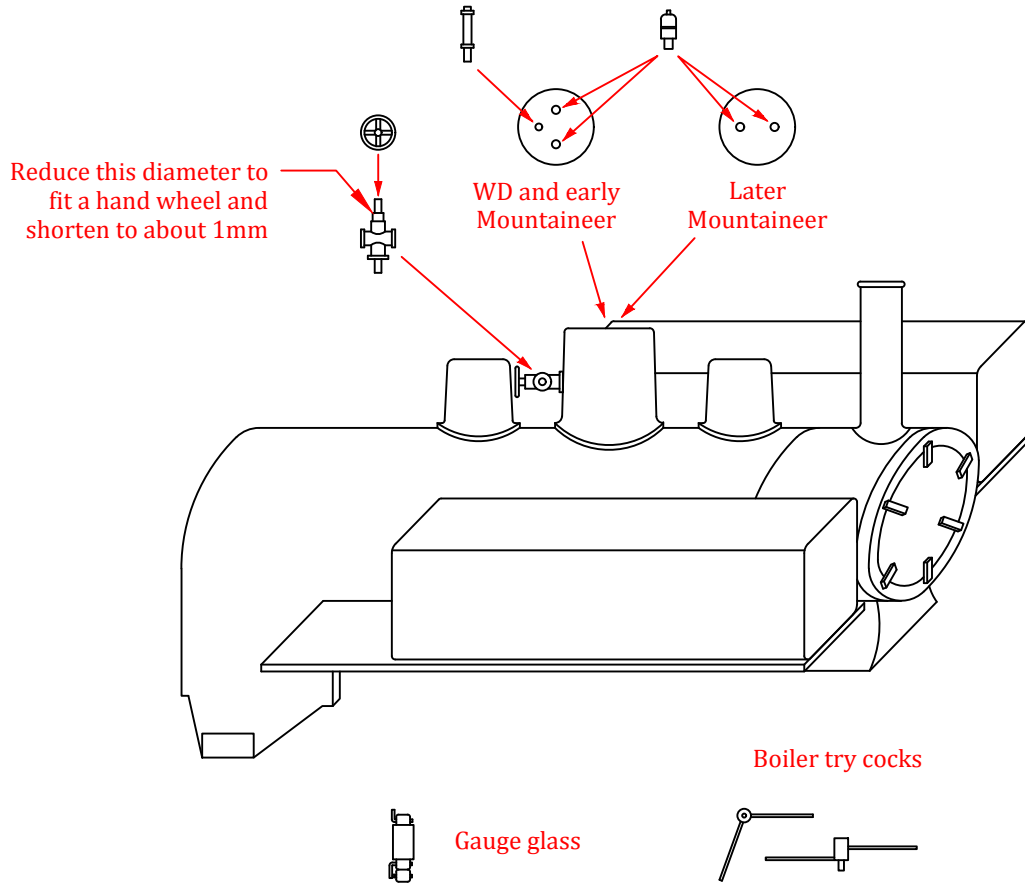
Mountaineer



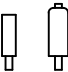
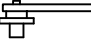


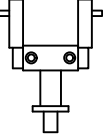

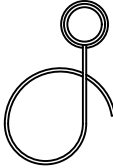
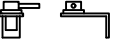


The height difference between the ledge at the rear and the smokebox base is just over 2mm

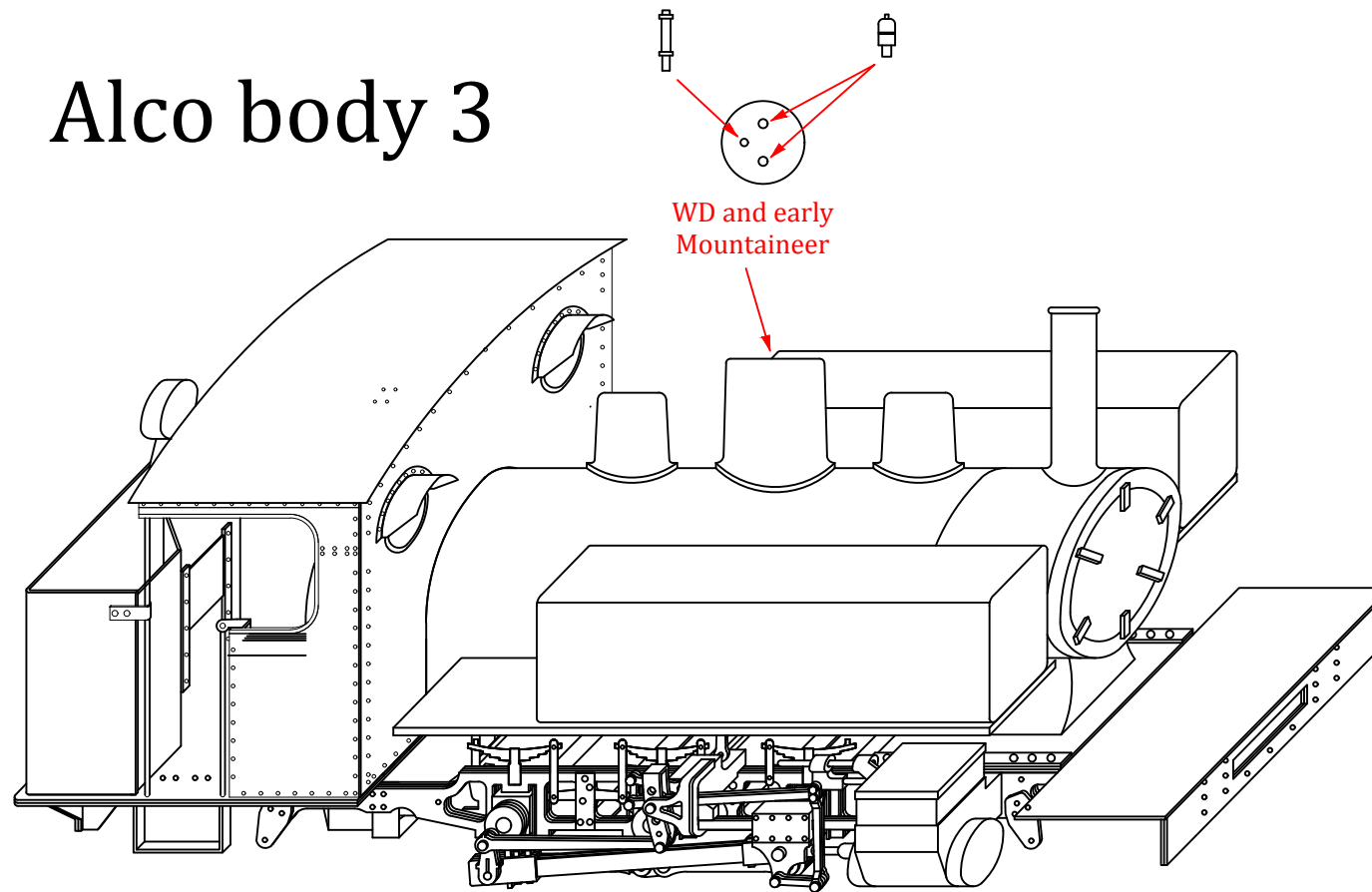
Before fitting any small parts, test the fit on the chassis and file the smokebox base until it sits level. The spacer bars under the tanks can be removed and the space used for weight or electronics if a hole is cut into the boiler for wiring.

Alco body 2



-  Safety valve
-  Organ pipe whistle
-  Twin hooters
-  Regulator
-  Hand wheels on small etch
-  Steam dome manifold
-  Steam fountain
-  Handbrake
-  Pressure gauge with pipe fitted, 0.5mm copper wire
-  Brake valve

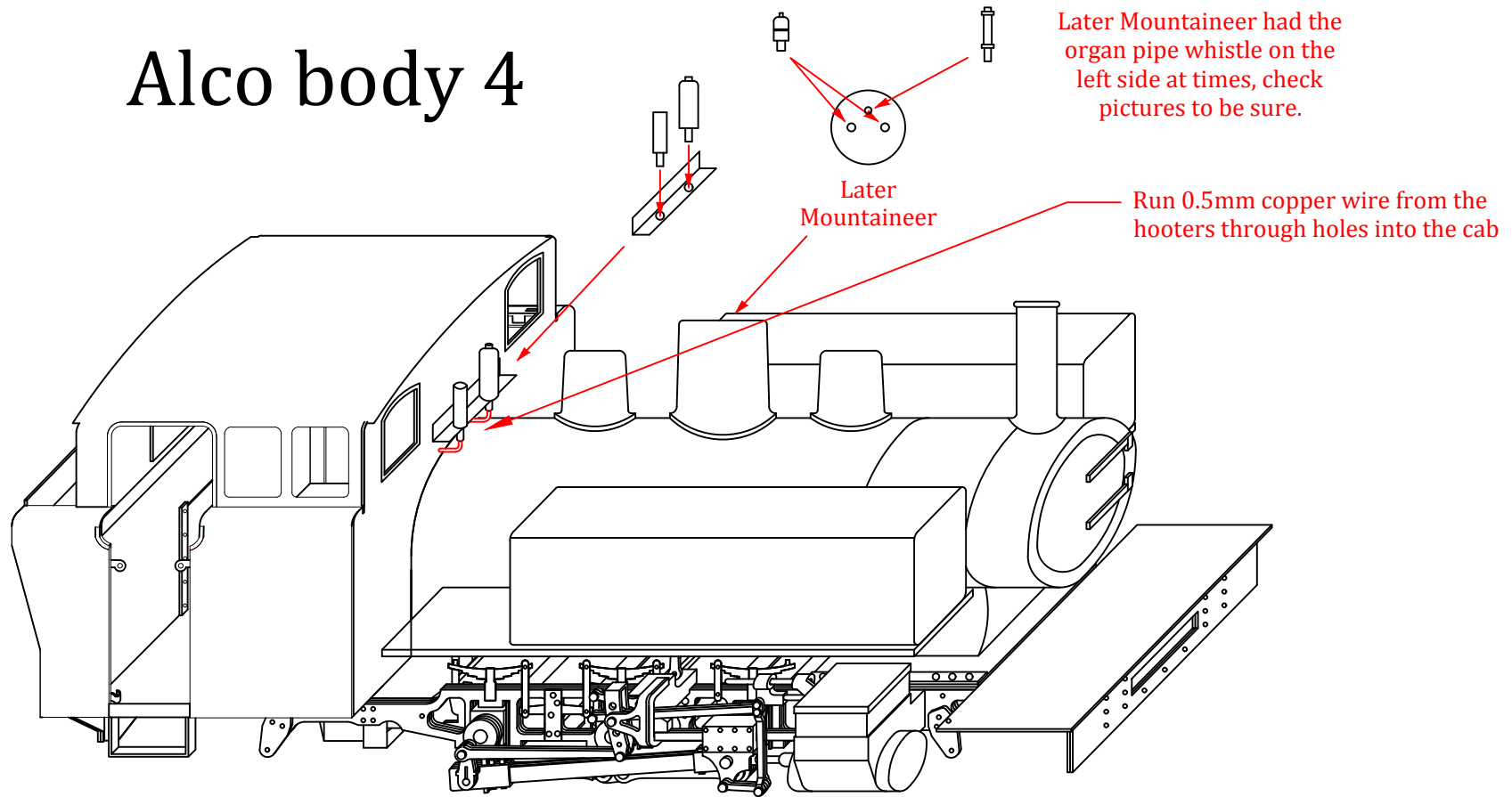
Alco body 3



I apologise for the drawing above, isometric view is good for showing parts and their positions but not good at depicting a finished item, drawing 3D printed parts in 2D is difficult and this looks more like something from the Isle of Sodor.

Test fit the printed parts and the cab on the chassis, the boiler should be level and the cut out in the cab front should fit around the boiler. The front screws cannot be fitted in the cab without drilling through the brackets underneath, my mistake but it works when you have done this. When happy with the positioning of everything, mark and drill a 2.4mm hole in the front platform, continue this hole into the smokebox but at 1.6mm and secure the front with a self tapping screw. The rear of the boiler should be held in place by the cab front, if you find it is not secure enough, use an epoxy adhesive under the rear of the firebox where it rests on the spacer, this will hold it in place but will not be hard to remove if required in the future.

Alco body 4



Alco body 5

I made an error with the steam fountain but it can be rescued with minor changes. Cut the upright parts in half at the red line shown and drill 0.5mm holes in the side facing the driver. Fit short lengths of wire in these for hand wheels and drill hles in the sides for pipes.

