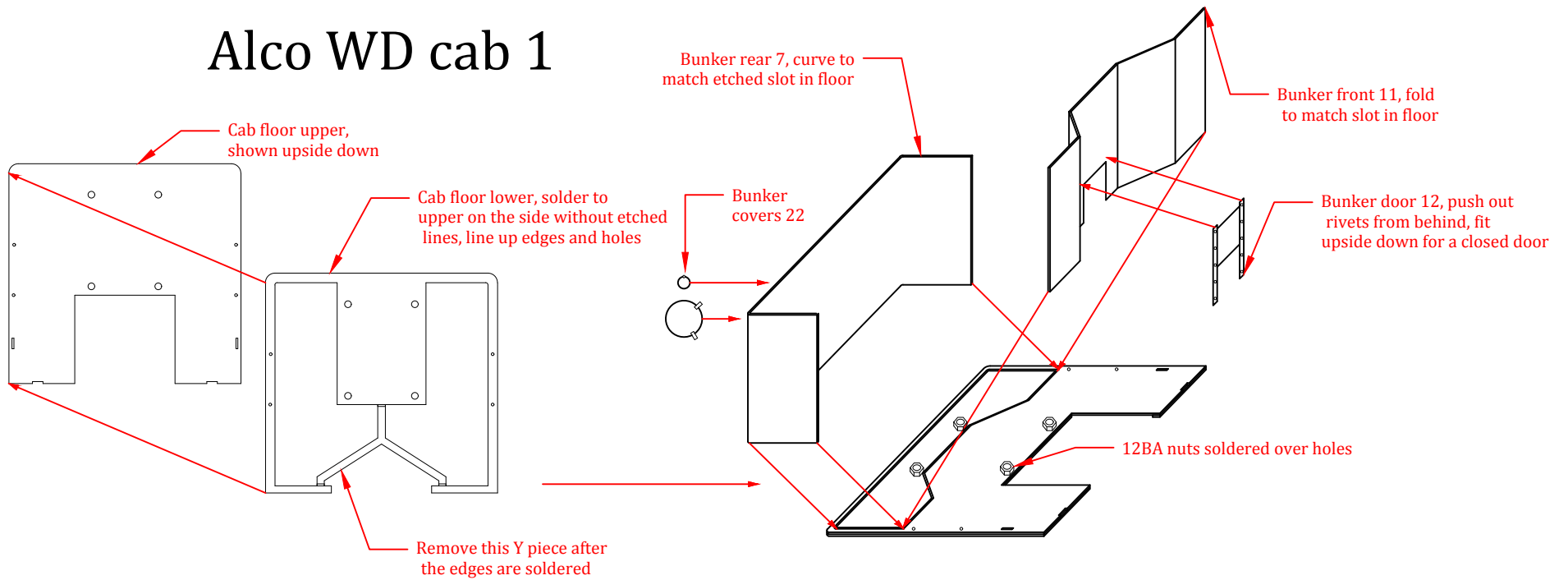
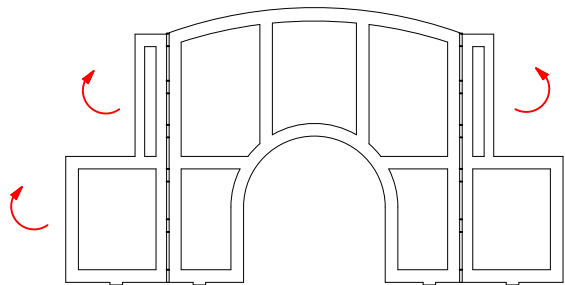


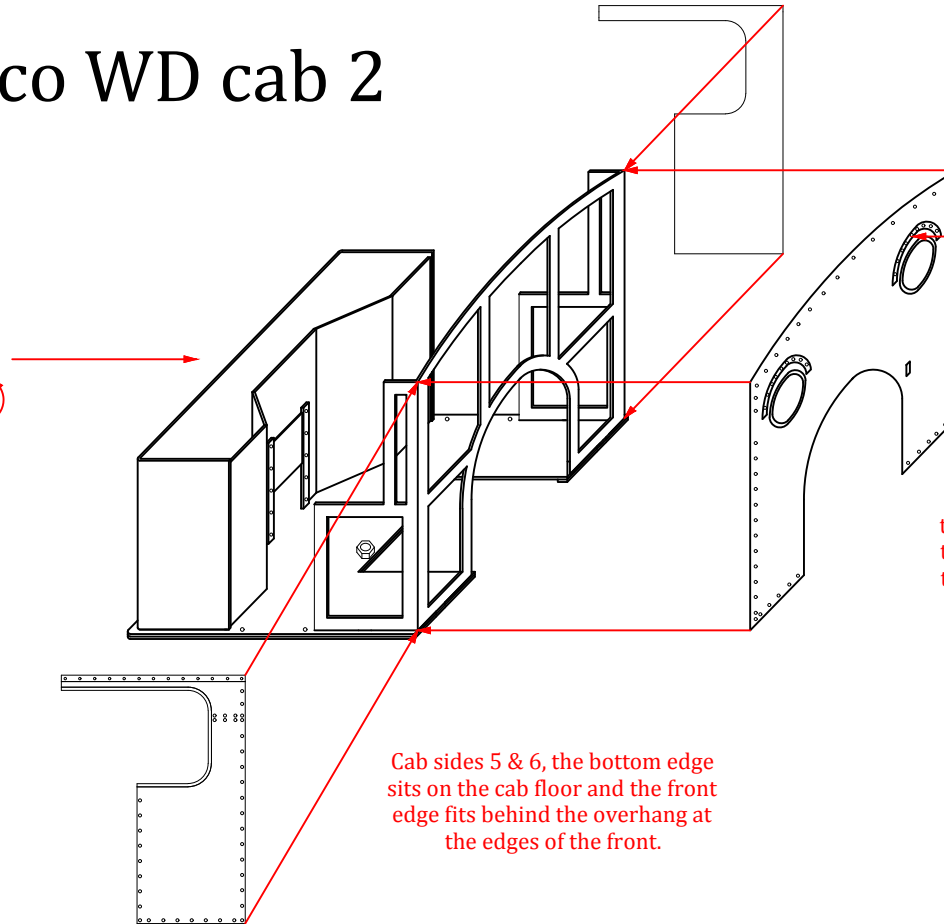
Alco WD cab 1



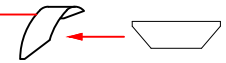
Alco WD cab 2



Cab front frame 2, fold sides back 90 degrees and solder into slots in the floor



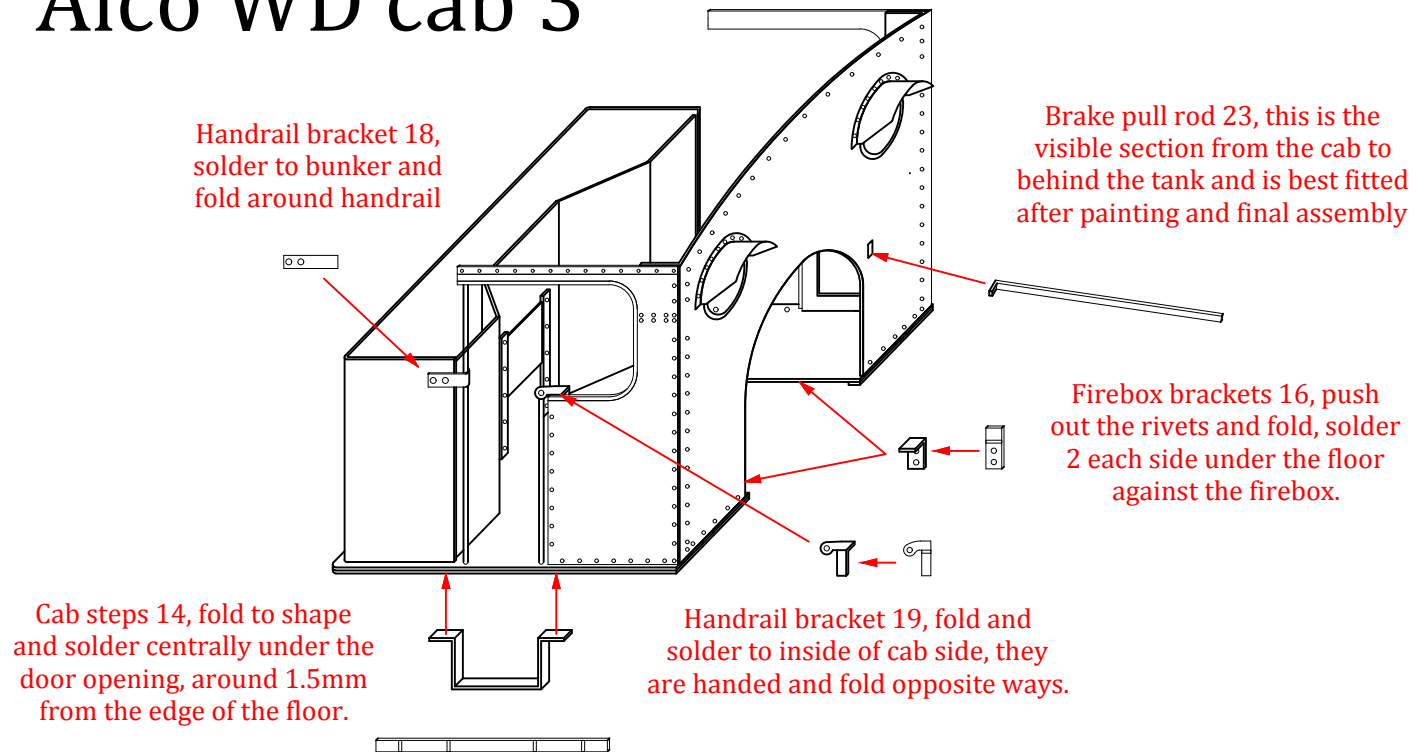
Window shields 27, curve until they fit under the rivet strip above the windows and solder in place



Cab front 4, push out the rivets in the curved strips over the windows, line up the top edge and ensure that the overhang at both sides is the same, solder at all points where it touches the frame.

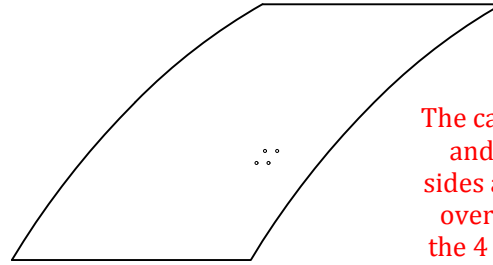
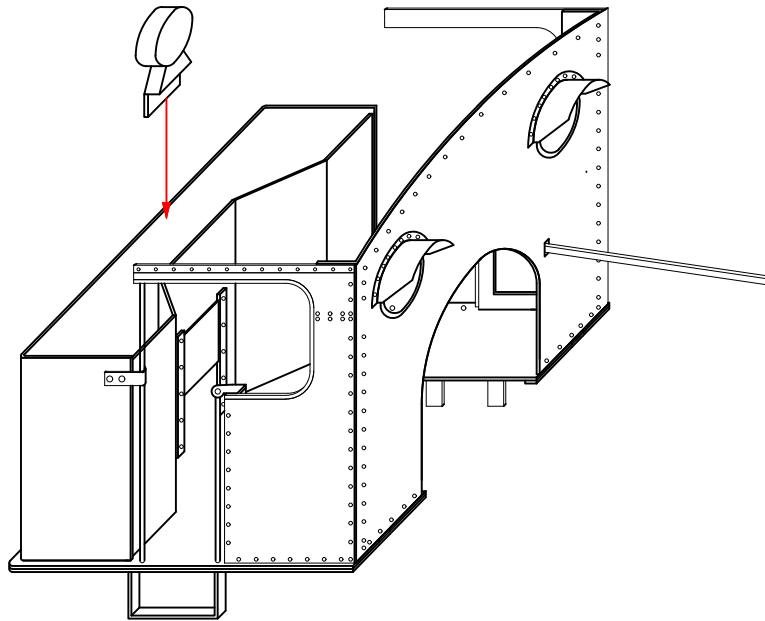
Cab sides 5 & 6, the bottom edge sits on the cab floor and the front edge fits behind the overhang at the edges of the front.

Alco WD cab 3



Alco WD cab 4

The rear lamp is glued or soldered centrally inside the bunker rear.



The cab roof 15 is curved to shape and soldered to the top of the sides and front, the front and rear overhangs should be equal and the 4 rivets in a square should be to the right nearer the front.

Fold the front lamp bracket to this shape and attach to the front of the smokebox, the lamp is glued on top.

